

avana

a little more of life

1,2,3 BHK Homes - Patrakar Colony, Near Mansarovar

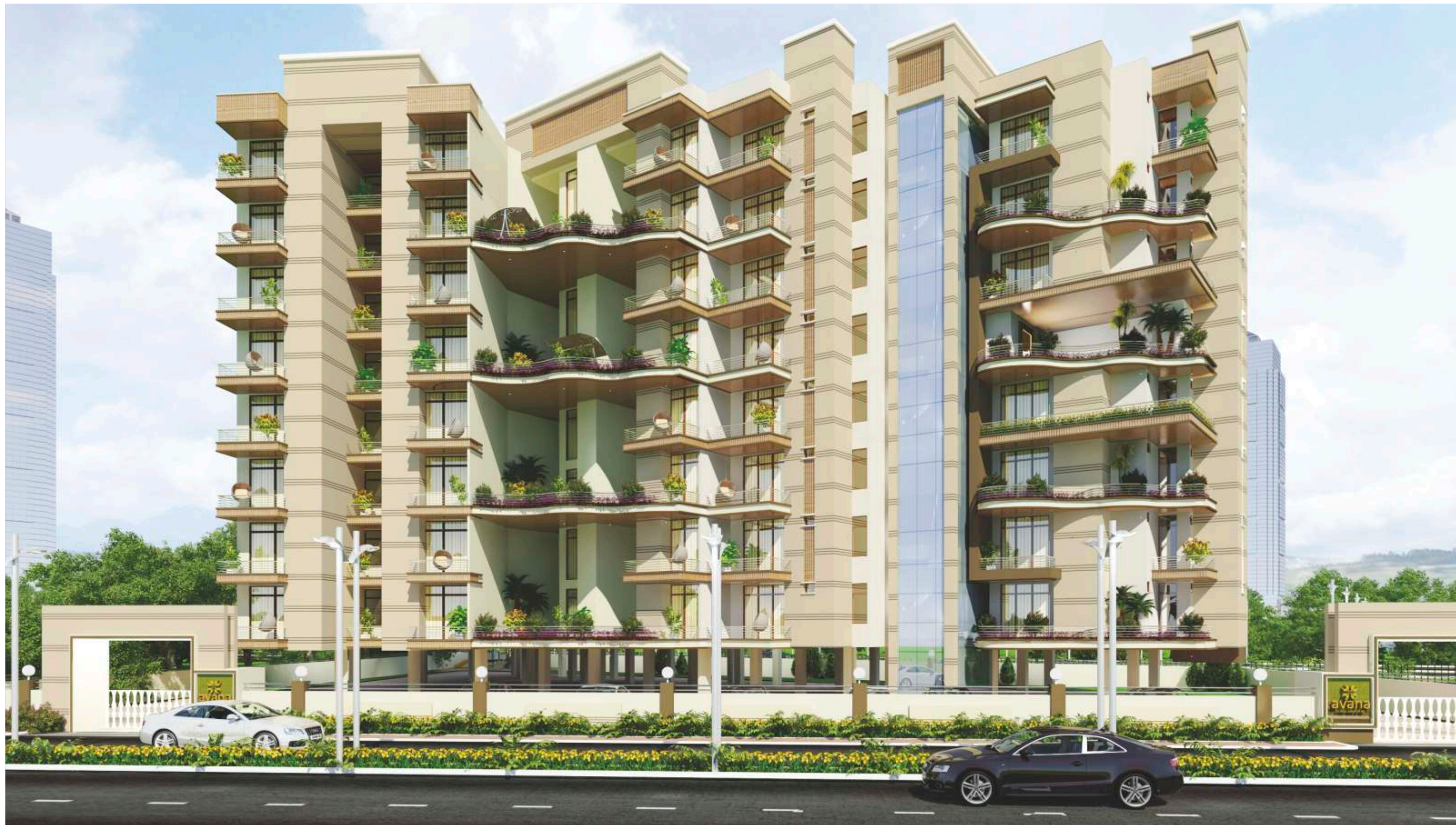
JAIPUR - INDIA

**A
little
more
of
joy**



What does avana stand for? avana is a Sanskrit word which means desire, wish, satisfaction, joy, pleasure and protection. Our idea of having the building name avana is to highlight what this home stands for and how the house is designed based on a concept which resonates with the aspiration of the residents. A house which believes in a human connect and sets a foundation of aspirations and dreams.





Where
life
comes
alive...



avana is a home built for you, a home
that reflects your ambitions and
aspirations. A home that brings your
dreams to life.



A little more of Life



Life is a constantly progressing experience. To say something is the best would be to limit its potential for progress. Avana is a sense of growth, always offering its residents 'a little more of life.'

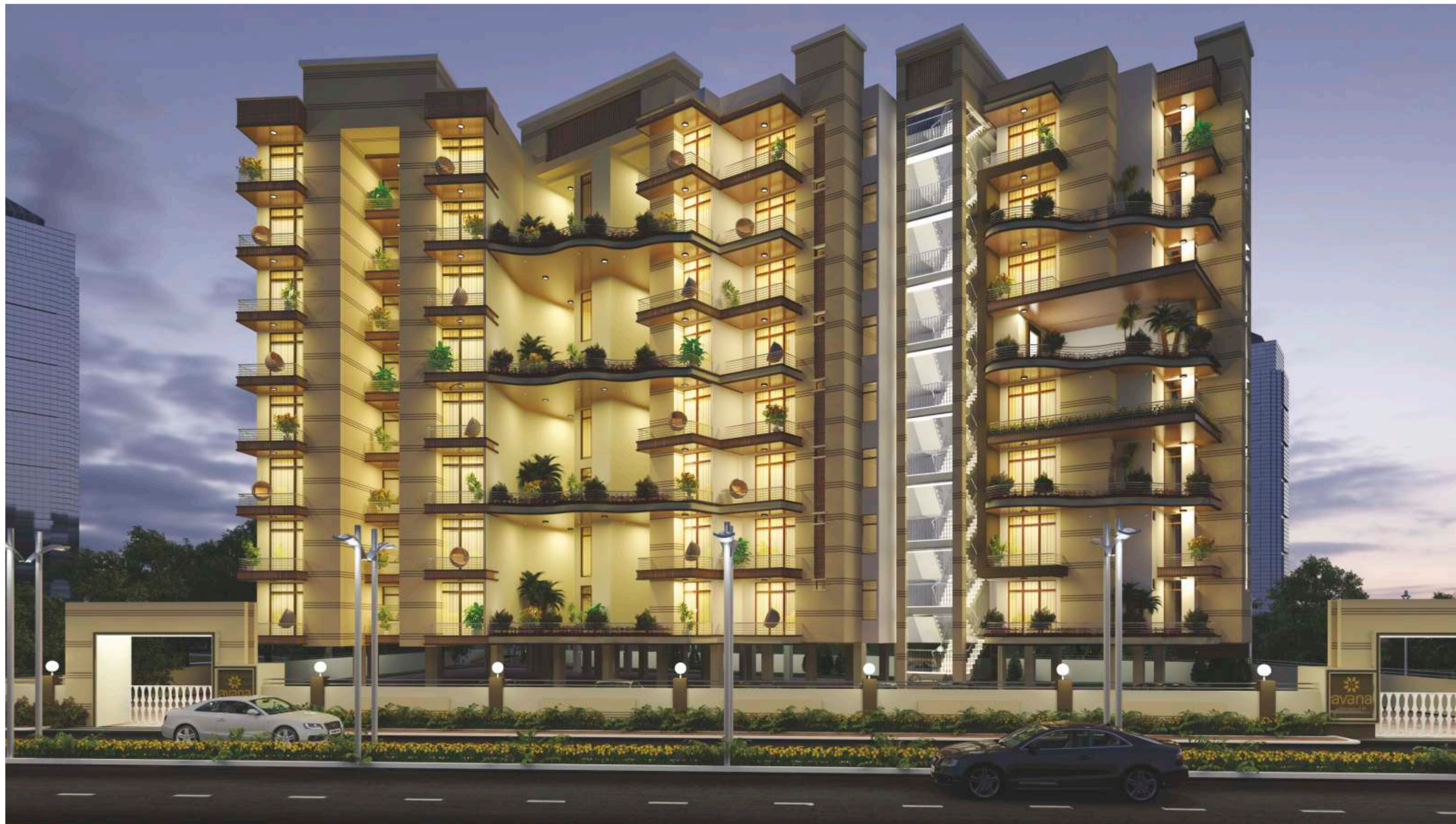




Where
Space
is not
restricted
to the
square
foot
area...



we believe that space is beyond square
feet area, its about how it adapts to a
person and his needs. Space is not only
about how far can you stretch you arms,
but its more about spreading your arms
in a space which is made for you.



Where
design
is not
just
beautiful
but
also
functional



we believe in the power of design, the fact that design is not just about aesthetics, but more importantly about functionality. avana is the perfect melange of beauty and utility.



A
little
more
of
you



A home is a place where you can be you and
so it is with avana.

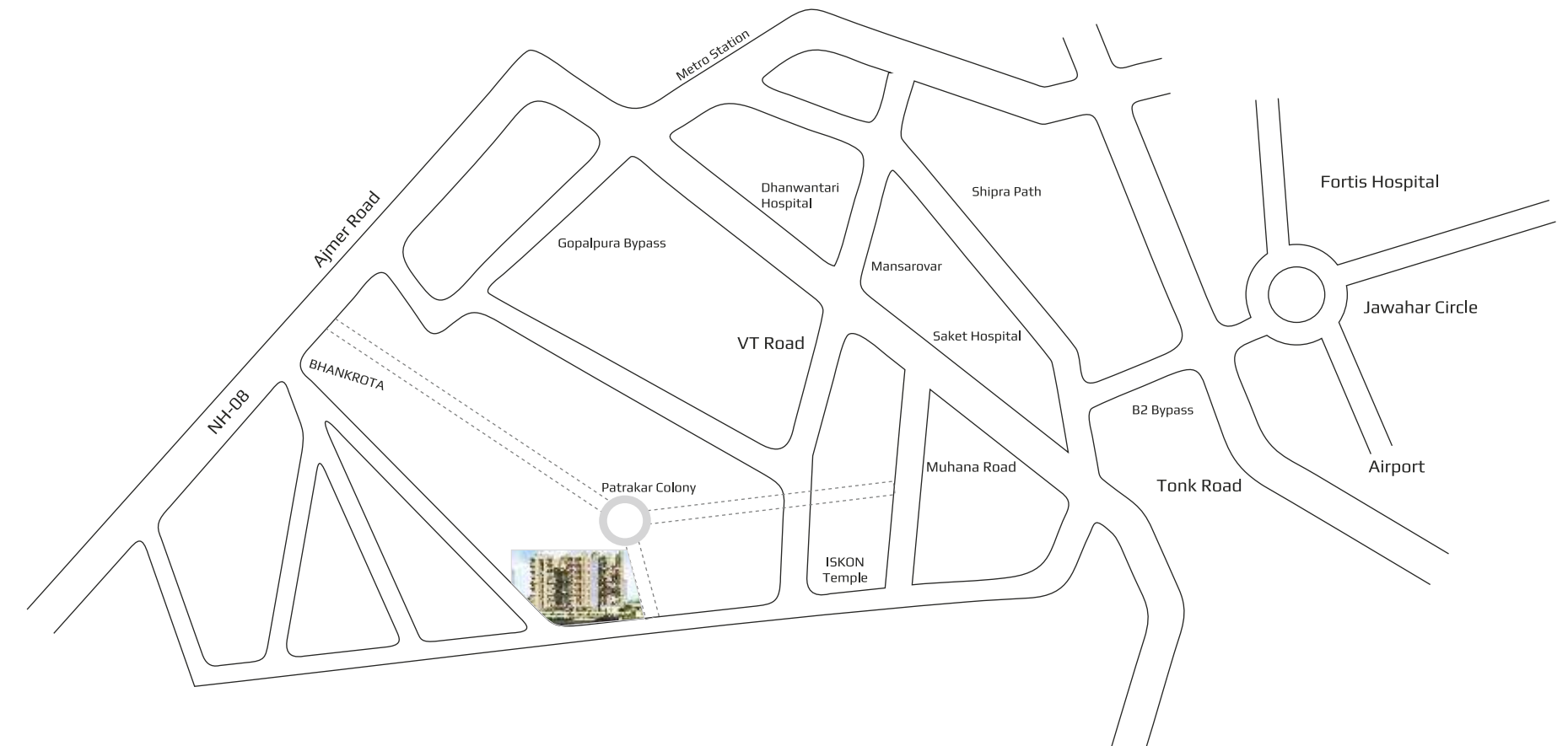


A little more of thought

- Has been ranked as the 24th fastest growing city in the world.
- Located at the confluence of three national highways NH8, NH12 and NH11.
- NH8 links Delhi to Mumbai via Jaipur, NH12 links Jaipur to Bhopal and NH11 links Jaipur to Agra.
- The Ring Road Project, is a 150 km roadway planned, which connects Jaipur internally to cater to the growth of the city.
- The Jaipur Metro Rail Network Project has completed its first phase & work on second has already begun. Opportunities in the city have generated interest among many indigenous and multi-national companies who are exploring business opportunities in Jaipur.
- Gems & Jewellery, Tourism & Handicrafts have been traditionally marked the presence of Jaipur on a global scale.
- Developments in the recent past like Mahindra World City (SEZ), JCB, Hero Motocorp, Genpact, Infosys, Education & IT Industry have added to the economic importance of Jaipur as a preferred industrial investment destination.



Location map



- Adjacent to well habitated Patrakar Colony
- 10 min drive from VT Road Junction at New Sanganer Road / Mansarovar
- 20 min drive from Jaipur International Airport
- 20 min drive from Fortis Hospital & 10 min from Saket and Dhanwantari Hospital
- 15 min drive from schools like DPS, IIS and Neerja Modi
- 10 min drive from ISKCON Temple, 5 min drive from Jain Mandir, while a Shiv Mandir is just 200 mts.
- 15 min drive from Mansarovar Metro Station
- 10 min drive to NH – 8 (Bhankrota Junction)
- 20 min drive to Pink Pearl Amusement Park, Gaurav Towers, WTP & Entertainment Paradise.



An artistic impression of avana's aerial view



Where
new
dreams
are
born



avana is spread over 2898 sq yard land
area and the total built up area of avana
is approximately 1.25 lakh sq ft.



A
little
more
about
avana



stilt floor plan



- Total number of units - 82
- 1 BHK - 08 units
- 2 BHK - 53 units
- 2 BHK with private terrace - 11 units
- 3 BHK Penthouse - 10 units
- Gated Residential Complex Bounded from All four Sides for Safety & Security
- Play Area for Children & Senior Citizen's Corner
- Picturesque Entrance Lobby with Lifts
- Rain Water Harvesting
- Dedicated Parking Area for Visitors and Residents in Basement & Stilt Floor

Typical Floor Plan



Anything and Everything you need to know about avana.

Project
Approved by



I. Structure

- Earthquake Resistant RCC Framed Structure
- Anti Termite Treatment during various stages of construction

II. Wall Finish

- Internal—Plaster, Putty & Acrylic Oil Bound Disptemper
- External—Texture Paint

III. Flooring

- Drawing/Dining/Bedrooms—Vitrified Tiles
- Balconies—Ceramic Tiles
- Staircase—Granite

IV. Toilet

- Walls—Ceramic Tiles up to 7 ft height
- Flooring—AntiSkid Ceramic Tiles
- Fittings – Hot and Cold Water Supply Pipeline with CP fittings of Reputed Make; Mirror& Towel Rail
- Sanitaryware—White/Pastel Color vitreous sanitary ware of reputed make

V. Windows

- Frame & Shutter—Aluminium/UPVC

VI. Doors

- Internal Doors—32mm thick laminated flush door
- Entrance Door—Designer Teak Wood Door

VII. Power Back up in all the Common Areas

VIII. Electrical

- Adequate Light Points & Power Points in all rooms, kitchen & toilets
- Copper wiring of reputed brand in concealed PVC conduits
- Reputed Modular Switches for Light & Power Points
- TV and Telephone Points in all rooms
- Provision for Geyser points in all toilets and kitchen

Kids play area

avana understands the importance of playful moments, thats why we have built a special kids corner, so that your children can enjoy ‘a little more of their childhood



Gymnasium and fitness centre

Good health is the key to a great life, at avana we offer a fully equipped gymnasium and fitness centre with modern amenities wishing you ‘a little more of good health’



Multi-purpose community centre

We at avana understand the importance of special occasions, and thats exactly why we offer a multi-purpose community hall, for you to celebrate your candid moments, for you to cherish ‘a little more of your sweet memories’





An artistic impression of the bedroom

- avana brings to you a home, specially designed to enhance ventilation and allow maximum natural light.
- each home is designed spaciously enough, enough to fill it up with your dreams and memories.
- avana is designed keeping in mind the effectiveness of vastu shastra.

A
little
more
of
space



An artistic impression of the living room



An artistic impression of the dinning area



Shubh Group is one of Udaipur's leading Real Estate and Infrastructure Development Company, engaged in the construction of Residential Apartments, Commercial Properties, Shopping Arcades in and around **Udaipur, Jaipur, Pune, Mumbai** and its Suburbs. **Established in 1985**, the company today has to its credit several prestigious projects.

The Group was founded by **Shri Babu Lal Motawat - Chairman**, a visionary by his own who had enough courage to dream beyond the horizon and established an empire based on values. **Mr. Rohit Motawat - MD**, the new generation of family leadership bought professional ethics, work culture with a view of leading the organization into the future and adhering to its long-held standards of excellence and values.

Apart From The Real Estate Development, **Shubh Group Diversified into Minerals, Marbles, Import of Metals from Singapore, Australia, Dubai & Export of FMCG Products to Gulf countries.**

Shubh Builders & Developers

Some of Shubh Group's Completed Projects Pan India



SHUBH AASHIYANA - UDAIPUR



SHUBH LABH - UDAIPUR



DIVYAM HEIGHTS - MUMBAI



SHUBH TOWER UDAIPUR



SHUBH APARTMENT UDAIPUR



SHUBH MANGAL APARTMENT UDAIPUR

Some of Shubh Group's Ongoing Projects Pan India



SHUBH NIWAS UDAIPUR



SAMPADA UDAIPUR



ETERNIA JAIPUR - VAISHALI NAGAR



PARASNATH NAGRI - MUMBAI



RICHMOND - PUNE

Upcoming Projects Pan India



SHUBH CORPORATE PARK



GOREGAON - MUMBAI

Shubh Mangal Marbles & Granites (P) Ltd.



Shubh Iron Traders



Shubh Grah Metals (P) Ltd.

Shubh Mangal Enterprises



SHUBH BUILDERS AND DEVELOPERS

SHUBH GRAH METALS PVT. LTD.

SHUBH MANGAL ENTERPRISES

SHUBH MANGAL MARBLES & GRANITES P LTD.

SHUBH IRON TRADERS

Real Estate

Metal Import

FMCG Export

Processing House

Iron Trading

UDAIPUR - Head office

1 Link Road Town Hall
Udaipur Rajasthan - 313001

L : 0294 - 2 420 200
C : +91 93 144 78 101
E : udaipur@shubhgroup.co

JAIPUR

Studio One - 202-203 2nd Floor
Sahkar Marg, Tonk Road
Jaipur Rajasthan - 302015

L : 0141 - 2 744 177
C : +91 70 739 99 141
E : jaipur@shubhgroup.co

MUMBAI - Corporate Office

Business Point - A 501 5th Floor
Near Air Cargo Complex, Sahar Int. Airport
Andheri - E Mumbai Maharashtra - 400099

L : 022 - 2682 8731 / 32
C : +91 70 456 69 501 / 02
E : mumbai@shubhgroup.co

PUNE

Sai Ambiance - A 402 Plot 2 B
Near Planet Millennium, Pimple Saudagar
Pune Maharashtra - 411027

L : 020 - 2740 5500 / 01
C : +91 83 902 68 777
E : pune@shubhgroup.co

AHMEDABAD

4D Square - Off no. 29 3rd floor
Gandhinagar Highway Motera
Ahmedabad Gujarat - 380005

L : 079 - 2 77 00 189
C : +91 97 129 63 031
E : ahmd@shubhgroup.co

W : www.shubhgroup.co

Customer Care No : +91 888 12 888 12

E : info@shubhgroup.co

UDAIPUR | JAIPUR | AHMEDABAD | SILVASA | MUMBAI | PUNE
REAL ESTATE | MARBLE | METALS | MINERALS | FMCG | FIBER | PET PREFORM



A little more about us

With an aim to uplift the living standard of people throughout Rajasthan's tier and 3 tier cities, the strong foundations of 'ARIHANT GROUP' were laid. Pioneering realms since then, the name stands all of in the Real Estate sector of Rajasthan.

Clinching the niche of a planned development across residential, commercial, and retail segments of the industry, the group firmly believes in inspiring a redefined living. Re-incarnating from old to the contemporary face along with perfectly rendered transition plans, the group looks out for lifestyle transformations in the targeted cities, through the architectural and creative brilliance. Growing at a fast pace, the group is sure to establish itself as a market leader in the real estate and infrastructure industry.

The group was founded by Mr Rakesh Goel who himself has made a name in the real estate industry and for his services was also awarded as the "Icon of Rajasthan" in 2014. The legacy which he started is being continued by his sons Mr Rishabh Goel and Mr Ripul Goel whose main inception is to take the group forward along with innovative ideas and creating new milestones.



Arihant Dynasty | Patrakar Colony | Mansarovar



Arihant Heights | Patrakar Colony | Mansarovar



Arihant Shree Krishnam Residency | Opp. Dher ke Balaji Mandir | Ambabari



Arihant Legacy | Bilwa, Nr. Chokhi Dhani | Tonk Road

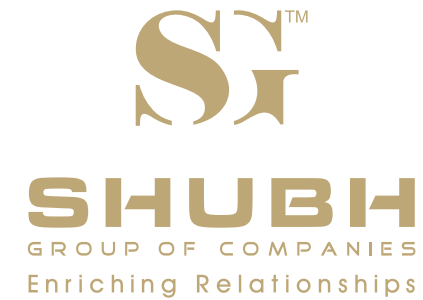


Arihant Sai Residency | Jaisinghpura | Ajmer Road



Arihant Shree Krishnam Heights | Nr. Chokhi Dhani | Tonk Road

Developer



Land Owner



avana

a little more of life

Site Address:

Khasra No. 56, Narottampura, Rampura Road,
Patrikar Colony, Near Mansarovar, Jaipur - Rajasthan

For Booking/Project Detail, Contact us : +91 888 12 888 12

UDAIPUR - Head office

1 Link Road Town Hall
Udaipur Rajasthan - 313001

L : 0294 - 2 420 200

JAIPUR

Studio One - 202-203 2nd Floor
Sahkar Marg, Tonk Road
Jaipur Rajasthan - 302015

C : +91 70 739 99 141

MUMBAI - Corporate Office

Business Point - A 501 5th Floor
Near Air Cargo Complex, Sahar Int. Airport
Andheri - E Mumbai Maharashtra - 400099

L : 022 - 2682 8731 / 32

W : www.shubhgroup.co ♦ **E :** info@shubhgroup.co

ARCHITECT : Tushar Sogani Designs Pvt Ltd

This brochure is not a legal document and just describes the developer's intended conceptual plan. Specifications and details provided are tentative and may change at the sole discretion of the developer and / or / architect